

P/N : 48 SMC SCS FLD

Optical UPC SC simplex singlemode field connector for 3/2/0.9mm

Physical Properties

Types	SC
Surface of the ferrule	Ultra Polished
Outside diameter of the ferrule	2.5mm +/- 0.001mm
Material of ferrule	ZrO ₂ (Zirconia / Ceramic)
Connector surface	Convex
Connection of fiber	Cleave & play
Material of body	Blue composite
Ferrule drilling	125/126 μm
Type of boots	900μm, 2mm or 3mm
Colour of boots	Black
Insertion method	Push-pull

Optical performances

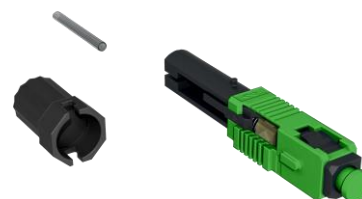
Mating cycles:	< 0.3 db, 100 cycles
Return Loss	Typical 40 dB maximum
Insertion Loss (Attenuation)	Typical 0.30 dB to 0.5 dB maximum
Operating temperature range	-40°C to 75°C
Storage temperature range	-40°C to 75°C

Related products

Part number	Description	Packaging
48 MMC SCS FLD	UPC Multimode simplex SC field connector for 900μm/2mm/3mm cables	Pack of 6
48 SMC SCAS FLD	APC Singlemode simplex SC field connector for 900μm/2mm/3mm cables	Pack of 6



48MMCSCSFLD



48SMCSCASFLD

Ordering information

Part number	Description	Packaging
48 SMC SCS FLD	UPC Singlemode simplex SC field connector for 900μm, 2mm & 3mm cable	Pack of 6