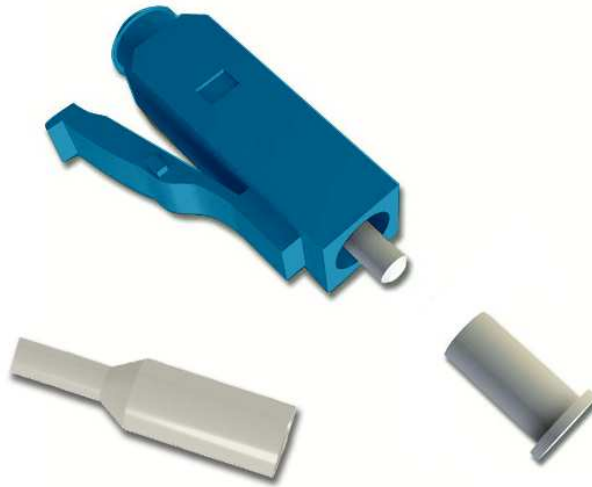


**P/N : 48 SMC LCS**

Optical UPC LC simplex singlemode connector for 900µm cables



P/N: 48SMCLCS  
LC UPC simplex connector, suitable for OS1, OS2

## Applications

MMC optical connectors are ideal for all singlemode applications. These connectors are a part of the complete optical link and suit all types of singlemode networks, like Telecom, LAN (local Area Network), WAN (Wide Area Network) and MAN (Metropolitan Area Network). They can be assembled thanks to the MMC MASTER heat cure tool kit, or either any other cold cure tool kit.

## General Characteristics

- Optically and mechanically compatible with all the equivalent adapters.
- Singlemode connector with ceramic ferrule (ZrO<sub>2</sub>) and blue composite body
- 900µm white boot included
- Crimp termination
- Packaging : pack of 6 units

## Standards compliance

- IEC 61754-20,
- Bellcore/Telcordia
- TIA/EIA 604.10
- With no hazardous substances as detailed in ROHS 2002/95/EC

## P/N : 48 SMC LCS

Optical UPC LC simplex singlemode connector for 900µm cables

### Physical Properties

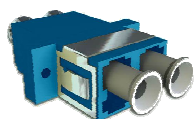
Types	LC
Surface of the ferrule	Ultra Polished
Outside diameter of the ferrule	1.25mm +/- 0.001mm
Material of ferrule	ZrO <sub>2</sub> (Zirconia / Ceramic)
Connector surface	Convex
Connection of fiber	Epoxy
Material of body	Composite, blue housing
Ferrule drilling	125/126 µm
Type of boots	900µm
Colour of boots	White
Insertion method	Push-pull

### Optical performances

Mating cycles:	> 1000 cycles. After 2000, typical increase of 0.05 dB
Return Loss	> 35.0 dB
Insertion Loss (Attenuation)	< 0.10 dB
Variations at low temperature (-10°C during 4 days)	< 0.3 dB
Variations at high temperature (60°C during 4 days)	< 0.3 dB
Variations at high humidity (90 à 95% @ 40°C during 4 days)	< 0.3 dB
Operating temperature range	-40°C to 80°C
Storage temperature range	-40°C to 90°C

### Related products

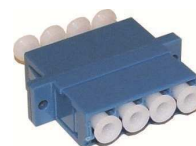
Part number	Description	Packaging
48 SMT LCD	UPC Singlemode duplex LC adapter with flange	Pack of 6
48 SMT LCQ	UPC Singlemode quad LC adapter	Pack of 6
MMC MASTER	Optical tool case	Unit



48SMTLCD



MMC MASTER



48SMTLCQ

### Ordering information

Part number	Description	Packaging
48 SMC LCS	UPC Singlemode simplex LC connector	Pack of 6